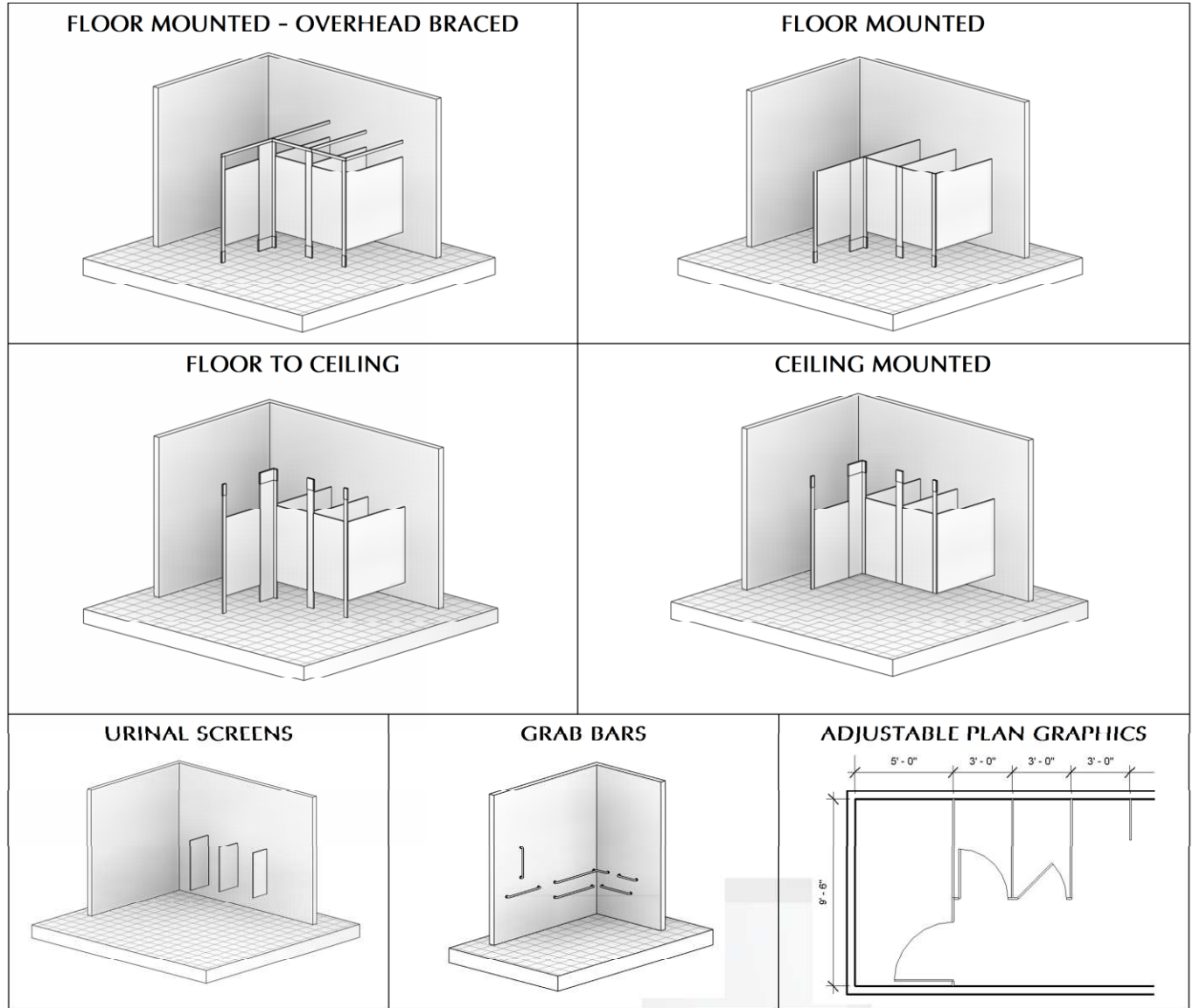


### OVERVIEW

The default Autodesk default library does not contain any toilet partitions so we developed a flexible, yet easy to use collection of families.



### LIBRARY INCLUDES

- ✓ 3 TOILET PARTITION FAMILIES - DOOR PANEL, DIVIDER PANEL, URINAL SCREEN
- ✓ 4 CONSTRUCTION TYPES – FLOOR & CEILING MOUNTED, OVERHEAD BRACED, FLOOR TO CEILING
- ✓ 4 GRAB BAR FAMILIES – 2 L-SHAPED, HORIZONTAL AND VERTICAL
- ✓ ADJUSTABLE MATERIALS
- ✓ ADJUSTABLE DIMENSIONS
- ✓ ADJUSTABLE PLAN GRAPHICS